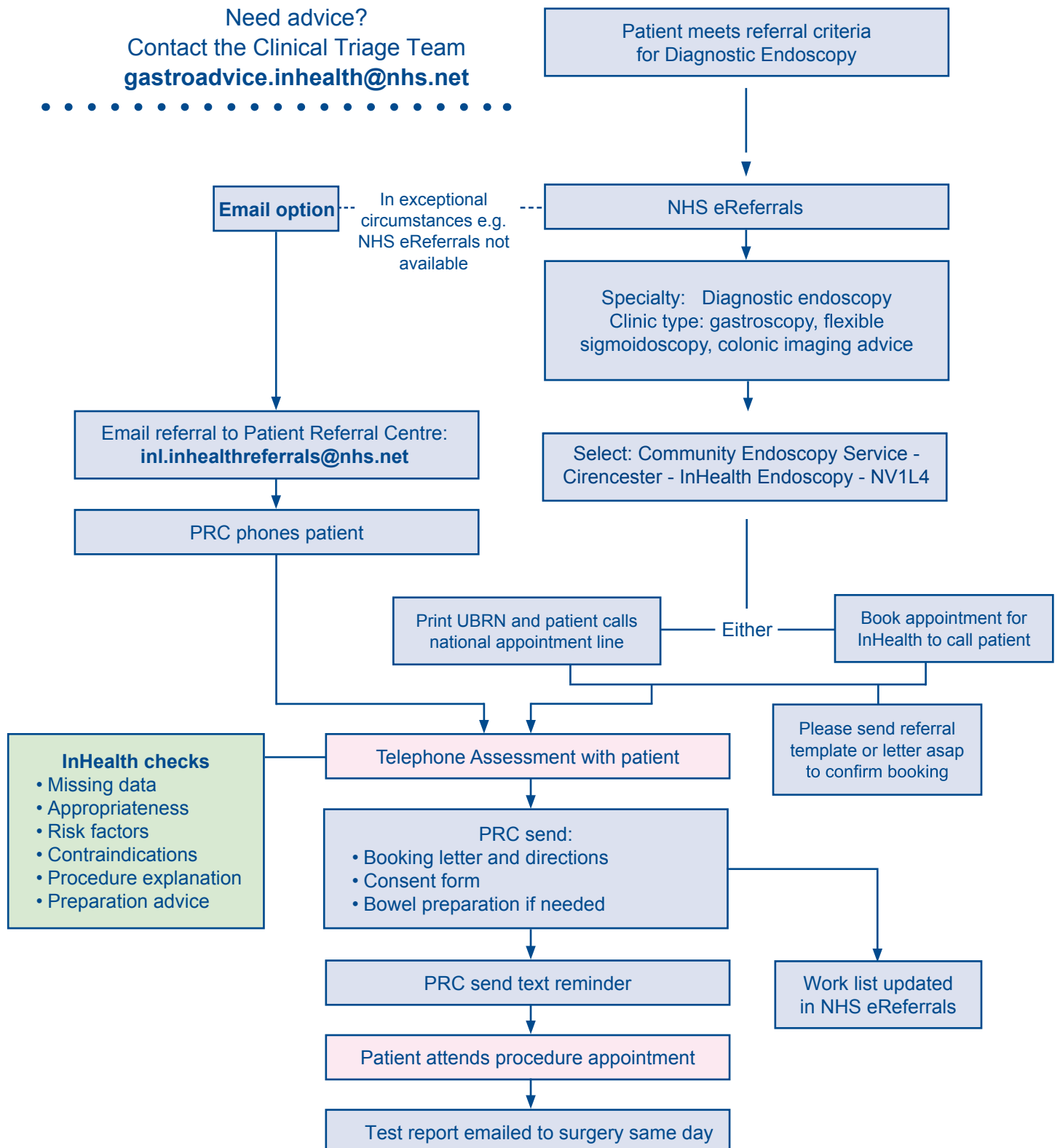


# Endoscopy Appointment Flowchart - Cirencester Community Endoscopy Service

For any queries relating to the process please call the Patient Referral Centre ("PRC") • Tel: **0333 202 3187**

.....  
 Need advice?  
 Contact the Clinical Triage Team  
**gastroadvice.inhealth@nhs.net**  
 .....



- InHealth checks**
- Missing data
  - Appropriateness
  - Risk factors
  - Contraindications
  - Procedure explanation
  - Preparation advice