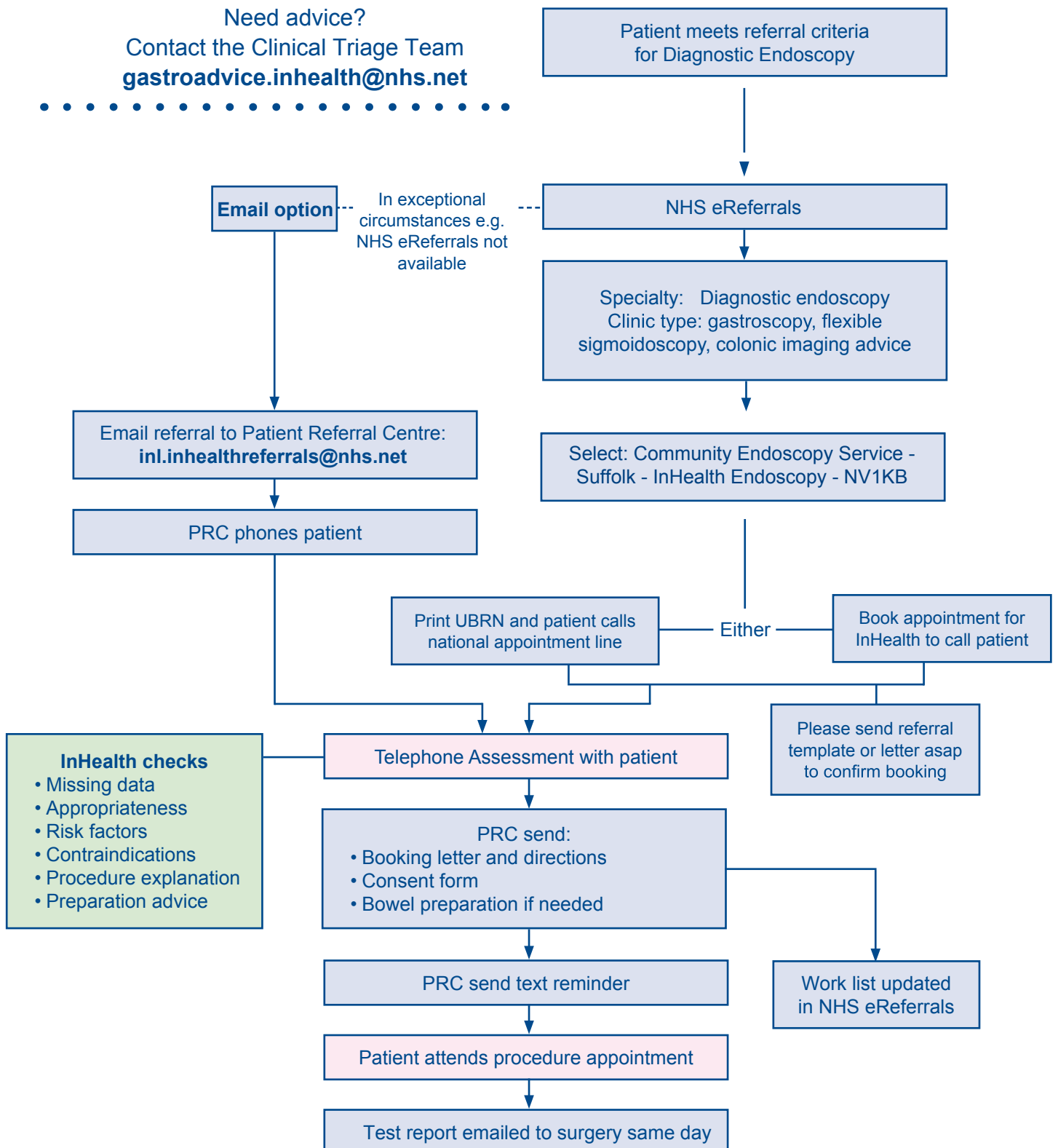


Endoscopy Appointment Flowchart - Suffolk Community Endoscopy Service

For any queries relating to the process please call the Patient Referral Centre ("PRC") • Tel: **0333 202 3187**

.....
 Need advice?
 Contact the Clinical Triage Team
gastroadvice.inhealth@nhs.net



- InHealth checks**

 - Missing data
 - Appropriateness
 - Risk factors
 - Contraindications
 - Procedure explanation
 - Preparation advice